

ESSENCE

W67 HI²

ELVIAL



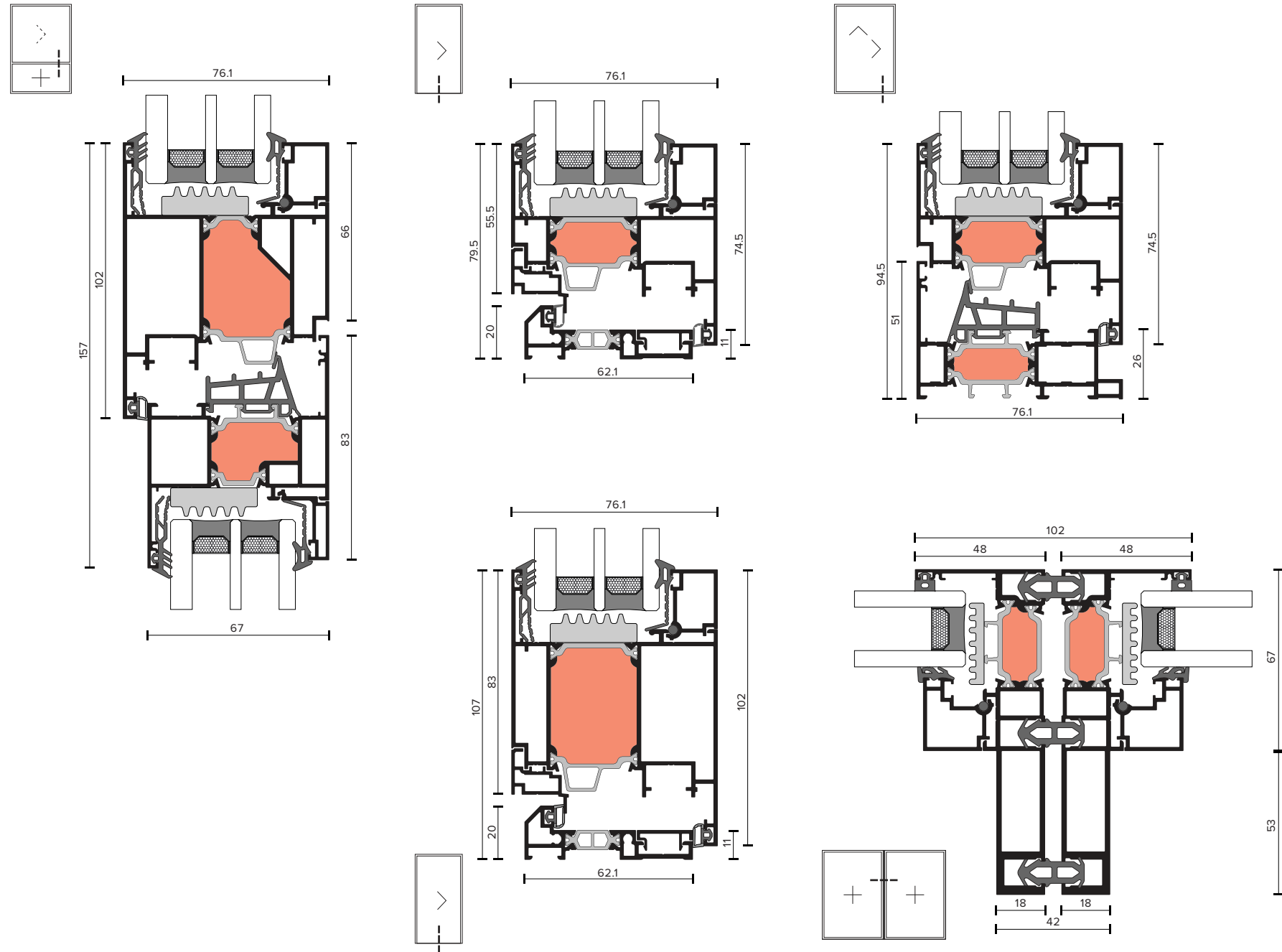
OPENING SYSTEM

Essence W67 HI² is as elegant as an aluminium profile can get and extremely reliable. It is the go-to solution when flexibility and dependability are of utmost importance.

ESSENCE

W67 HI²

This solution can be adapted to fit your capabilities and aesthetic demands and add an obvious asset to any project.



INWARD OPENING CONSTRUCTIONS

OUTWARD OPENING CONSTRUCTIONS

	Single sash fixed		Double sash fixed
	Single sash fixed with skylight		Double sash opening
	Single sash opening		Double sash titl & turn
	Single sash tilt & turn		Single sash tilt & turn with fixed parts using contractions and expansions
	Single sash titl & turn with fixed part		
	Single sash opening window door		
	Double sash opening window door		
	Single sash opening window door with fixed		
	Single sash projected		
	Special typology window wall		

TECHNOLOGY

THERMAL INSULATION

- 1 Insulating Bars **32mm** with Glass Fiber re-enforcement **25%**
- 2 **ELVIAL I²** Innovative Insulation Technology
- 3 **Co-Extruded** Gasket
- 4 Foam **Insulating** Profile

SEALING SYSTEM

- 1 Optimal 3-level Waterproofing with specially designed **EPDM** and Co-extruded Gaskets
- 2 **EPDM** Gasket Corners
- 3 **EPDM** End Caps for **Adjoining Profile**

INNOVATION

- 1 **Ghost Glazing Gaskets** Minimizes the visible facet and renders the gaskets practically invisible

EXTRA FEATURES

HANDLES FOR UNIQUE STYLE



COLORS



ENERGY LEVELS



Level 1
Uf: ≥ 1.8 W/m²K



Level 2
Uf: ≥ 1.2 W/m²K



Level 3
Uf: ≥ 1.1 W/m²K

IDENTITY

DESIGN

PROPERTIES

PERFORMANCE

ENERGY

COMFORT

NAFS

*For fixed and inward - outward opening

Frame Depth		67	mm
Min Face Height Frame - Sash		89	mm
Min Face Height Threshold - Sash		79	mm
Min Face Height Middle Mullion		154	mm
Max Sash Height		2.800	mm
Max Sash Width		1.400	mm
Max Sash Weight		180	kg
Max Glass Thickness		60	mm

ESSENCE W67 HI² offers you endless solutions in both European groove mechanism **[CE]** and Multilock groove mechanism **[ML]**

Thermal Insulation Uf	EN ISO 10077-2	≥ 1.1 W/m ² K
Air Permeability	EN 12207	Class 4 [600Pa]
Watertightness	EN 12208	E1050 [1.050Pa]
Resistance to Wind Load	EN 12210	C5 / B5 [2.000Pa]
Sound Reduction	EN 10140-2	40 dB 44.2/18/44.2 ^{Glazing}
AAMA Rating		Class AW*
PG Rating		100*

SEE LIFE FROM A DIFFERENT
VIEW THROUGH ELVIAL'S
ALUMINIUM SYSTEMS

DISCOVER OUR INNOVATIVE TECHNOLOGIES

ELVIAL I² INSULATION TECHNOLOGY
ELVIAL PRE-ANODIZING 2IN1

DISCOVER MORE ALUMINIUM SYSTEMS

ICONIC W77 AI²
ICONIC W77BS AI²
ICONIC W77ST AI²

ESSENCE W67BS HI²
ESSENCE W67ST HI²

ELVIAL W59 SI²
ELVIAL W60BS SI²

ESSENCE SL60 HI²
ESSENCE SL60 HI² FLAT EDITION
ELVIAL SL60 HI² CLASSIC
ESSENCE SL50 HI² FLAT EDITION
ELVIAL SL50 HI² CLASSIC

ELVIAL SL46 SI² CLASSIC
ELVIAL SL46 SI² FLAT EDITION
ELVIAL SL46 SI²_MD

ICONIC D77 AI²
ESSENCE D67 HI²

ESSENCE SD55
ESSENCE CLADDING CL180