

GHOST

G60 HI²

elVIAL

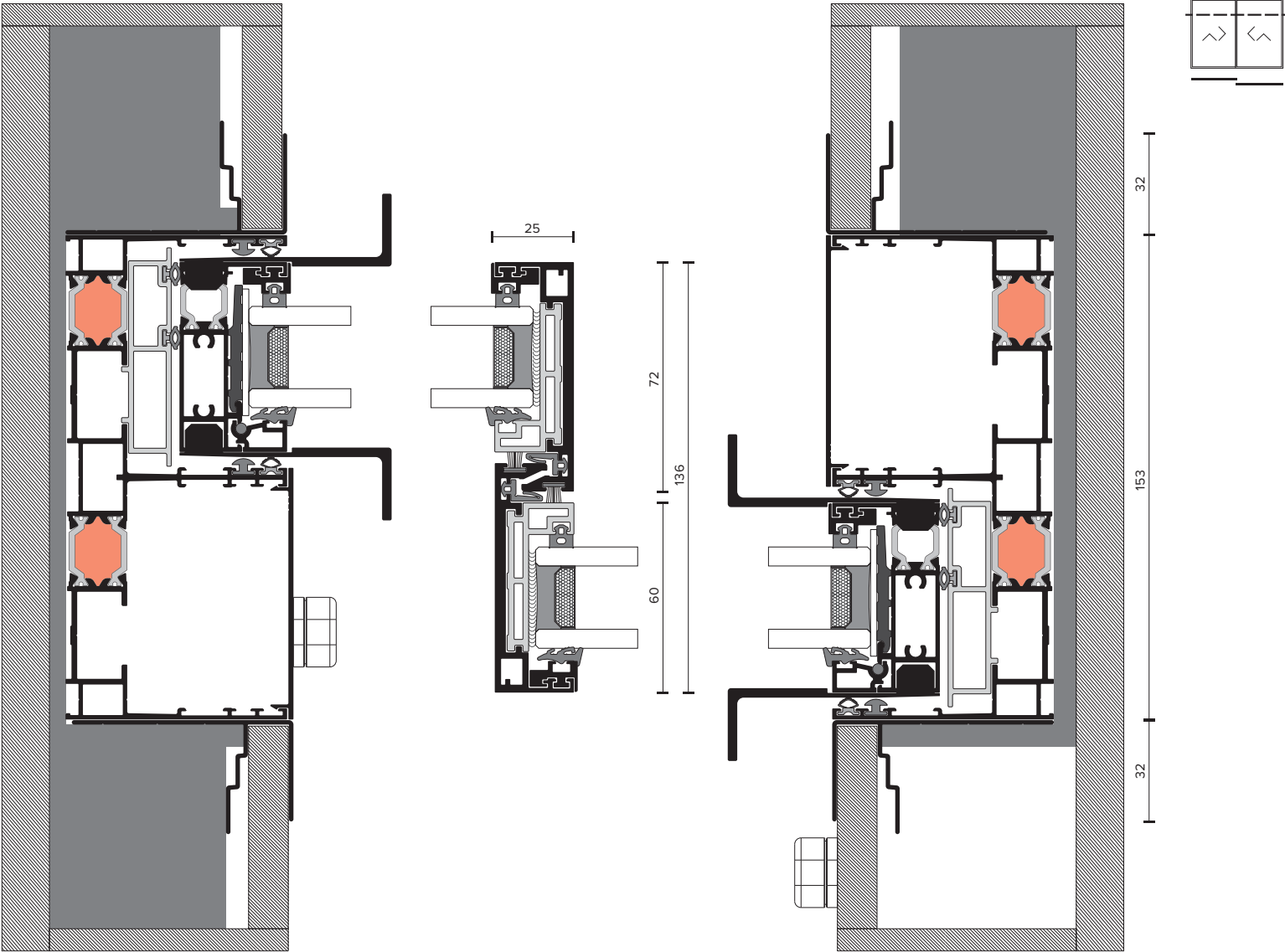


SLIDING SYSTEM

GHOST. The word is recorded from Old English -in the form gāst- in the sense "soul". We chose it because in this system we poured the true soul of ELVIAL. The profiles and track are so masterfully concealed you can only feel the powerful presence of energy and performance provided by our most potent technologies. Now let your own design, your own soul shine!

GHOST
G60 HI²

Beyond the frame.
Ultra-slim 25mm mullion width, concealed profiles seamlessly integrated into the walls and ceiling, and a flat track. Now you can experience limitless views. Independent controlled multiple locking system, the smoothest rolling of an astonishing 400kg sash. Now you can experience maximum comfort.



SLIDING
SUCCESSIVE
CONSTRUCTIONS

	2-Sash		2-Sash angular - Inner angle
	2-Sash with fixed part		2-Sash angular - Outer angle
	2-Sash with flyscreen		2-Sash angular with flyscreen - Inner angle
	2-Sash with fixed part and flyscreen		2-Sash angular with flyscreen - Outer angle
	3-Sash		3-Sash angular - Inner angle
	3-Sash with fixed part		3-Sash angular - Outer angle
	4-Sash meeting stile		
	4-Sash meeting stile with flyscreen		
	4-Sash meeting stile with fixed parts and flyscreen		
	6-Sash meeting stile with fixed parts		

TECHNOLOGY

THERMAL
INSULATION

- 1 Insulating bars with 25% glass reinforcement of 18 - 22mm
- 2 Customized Insulating bars are set on system’s tracks
- 3 Complete filling of the middle chamber on all system’s tracks using the innovative insulation technology of ELVIAL I²
- 4 A foam insulating profile (LDPE) is fitted at the perimeter of the glazing zone, minimizing thermal energy loss
- 5 Co-extruded gasket on tracks



ADVANCED
SEALING SYSTEM

- 1 Q-LON in the successive area insulating bars, even in the narrow mullion width edition
- 2 Specially designed gaskets that apply effectively in 2 points in the successive area
- 3 Specially designed co-extruded gaskets, guaranteeing a high level perimetrical waterproofing of the sash with the track
- 4 Elastometric central sealants of excellent design, which fit perfectly on the surface of the aluminium, giving a high sealing performance
- 5 Ghost glazing gaskets minimize the visible facet and renders the gaskets practically invisible

EXTRA
FEATURES

FUNCTIONALITY

- 1 Elegant special designed aluminium handle, integrated into the sash
- 2 Independent and discreet lock control
- 3 Multiple locking for excellent security
- 4 Easy lock installation



COLORS



Black



Inox Satine



Natural Anodized

IDENTITY

DESIGN

PROPERTIES

PERFORMANCE

ENERGY

Sash Depth		60	mm
Min Track Height		33	mm
Visible Height		43	mm
Middle Mullion Width Successive		25	mm

Max Sash Height		4.000	mm
Max Sash Width		3.000	mm
Max Sash Weight		400	kg
Max Glass Thickness		44	mm

Thermal Insulation Uf	EN ISO 10077-2	≥1.3 W/m²K
-----------------------	----------------	------------

SEE LIFE FROM A DIFFERENT
VIEW THROUGH ELVIAL'S
ALUMINIUM SYSTEMS

DISCOVER OUR INNOVATIVE TECH

ELVIAL I² INSULATION TECHNOLOGY
ELVIAL PRE-ANODIZING 2IN1

**DISCOVER MORE
ARCHITECTURAL SYSTEMS**

ICONIC W77 AI²
ICONIC W77BS AI²
ICONIC W77ST AI²

ESSENCE W67 HI²
ESSENCE W67BS HI²
ESSENCE W67ST HI²

ESSENCE SL60 HI²
ELVIAL SL60 HI² CLASSIC
ESSENCE SL50 HI² FLAT EDITION
ELVIAL SL50 HI² CLASSIC

MINIMAL LOOK SL68 AI²
MINIMAL LOOK SL52 HI²
MINIMAL LOOK SL52 HI
INVISIBLE INSIDE-OUT

ELVIAL SL46 SI² CLASSIC
ELVIAL SL46 SI² FLAT EDITION
ELVIAL SL46 SI²_MD

ESSENCE FD77

ICONIC D77 AI²
ESSENCE D67 HI²

ELVIAL FS50
ESSENCE SD55
ESSENCE CLADDING CL180